



NOVA
ESTATE AGENTS



Flat 43, 142 Midland Road, Luton, Beds, LU2 0GH

Luxury Penthouse Living in the Heart of Luton Town Center!

Are you ready to elevate your lifestyle in the heart of Luton? Look no further! We are thrilled to present this stunning 2-bedroom penthouse on Midland Road, available for rent.

The property briefly comprises of, entrance hall, lounge/dinner, kitchen, two bedrooms, en-suite abthroom to master, family bathroom and private roof terrace.

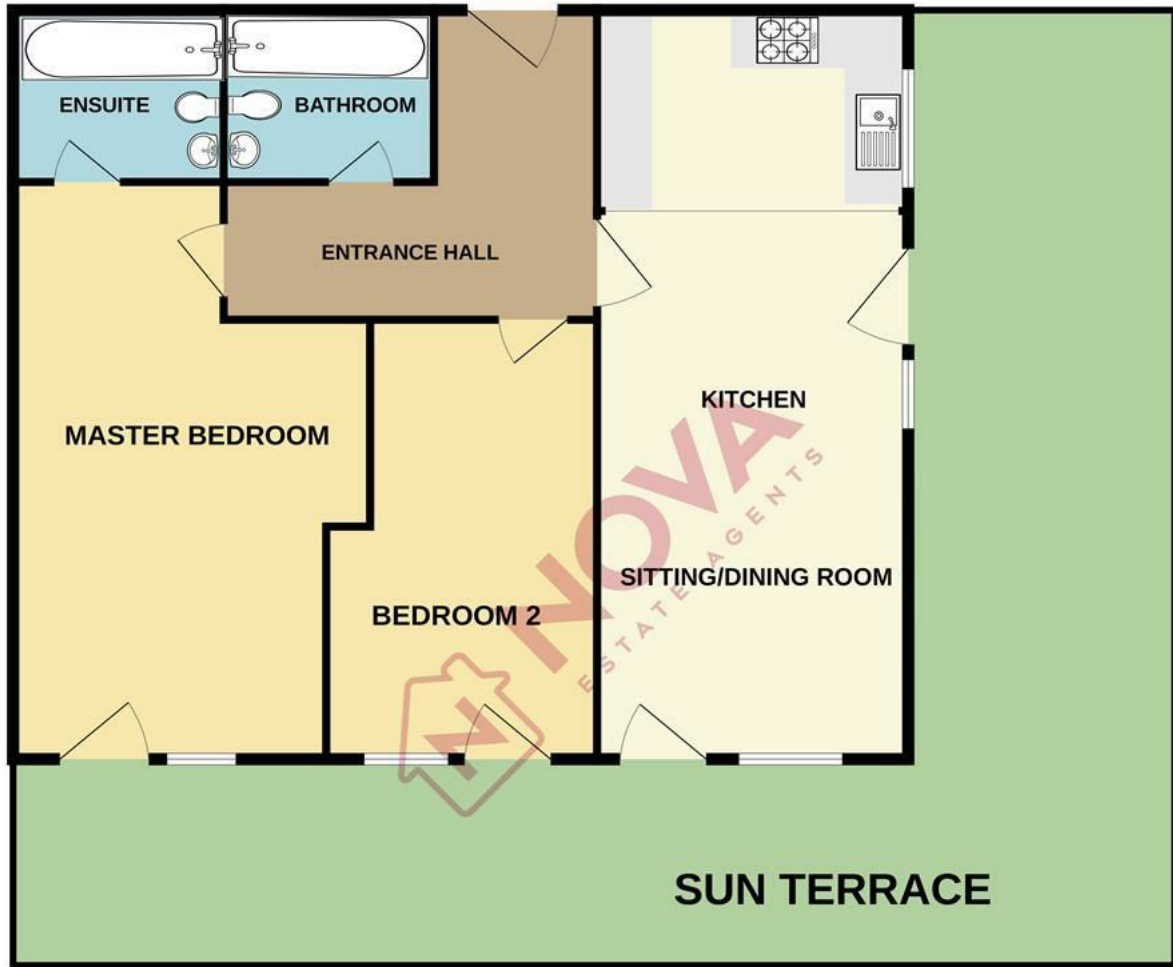
Key Features:

Location, Location, Location: Nestled in the vibrant heart of Luton Town Center, you'll have everything at your doorstep. Shops, restaurants, entertainment, and transport links are just moments away.

- Nova Estate Agents
- 2 Bedroom Penthouse
- Large Private Terrace
- En-suite to Master Bedroom
- Town Centre Location
- Panoramic Views Across Luton
- Bright and Well Presented Apartment
- Available Starting of December
- 1 Minute Walk to The Mall and Train Station
- Part Furnished

£1,500 Per month

GROUND FLOOR



Whilst every attempt has been made to ensure the accuracy of the floorplan contained here, measurements of doors, windows, rooms and any other items are approximate and no responsibility is taken for any error, omission or mis-statement. This plan is for illustrative purposes only and should be used as such by any prospective purchaser. The services, systems and appliances shown have not been tested and no guarantee as to their operability or efficiency can be given.
Made with Metropix ©2023

Energy Efficiency Rating		
	Current	Potential
Very energy efficient - lower running costs		
(92 plus) A		
(81-91) B	82	82
(69-80) C		
(55-68) D		
(39-54) E		
(21-38) F		
(1-20) G		
Not energy efficient - higher running costs		
England & Wales	EU Directive 2002/91/EC	